

Disorders of the Nervous System

Increased Synaptic Excitation and Abnormal Dendritic Structure of Prefrontal Cortex Layer V Pyramidal Neurons following Prolonged Binge-Like Consumption of Ethanol

Paul M. Klenowski,¹ Matthew J. Fogarty,² Masroor Shariff,¹ Arnauld Belmer,¹ Mark C. Bellingham,² and Selena E. Bartlett¹

DOI:<http://dx.doi.org/10.1523/ENEURO.0248-16.2016>

¹Translational Research Institute and Institute for Health and Biomedical Innovation, Queensland University of Technology, Brisbane 4000, Queensland, Australia, and ²School of Biomedical Sciences, University of Queensland, Brisbane 4072, Queensland, Australia

Abstract

Long-term alcohol use causes a multitude of neurochemical changes in cortical regions that facilitate the transition to dependence. Therefore, we used a model of long-term, binge-like ethanol consumption in rats to determine the effects on morphology and synaptic physiology of medial prefrontal cortex (mPFC) layer V pyramidal neurons. Following 10 weeks of ethanol consumption, we recorded synaptic currents from mPFC neurons and used neurobiotin filling to analyze their morphology. We then compared these data to measurements obtained from age-matched, water-drinking control rats. We found that long-term ethanol consumption caused a significant increase in total dendrite arbor length of mPFC layer V pyramidal neurons. Dendritic restructuring was primarily observed in basal dendrite arbors, with mPFC neurons from animals engaged in long-term ethanol drinking having significantly larger and more complex basal arbors compared with controls. These changes were accompanied by significantly increased total spine densities and spontaneous postsynaptic excitatory current frequency, suggesting that long-term binge-like ethanol consumption enhances basal excitatory synaptic transmission in mPFC layer V pyramidal neurons. Our results provide insights into the morphological and functional changes in mPFC layer V pyramidal neuronal physiology following prolonged exposure to ethanol and support changes in mPFC activity during the development of alcohol dependence.

Key words: dendrite; ethanol; mPFC; pyramidal; spines; synaptic currents

Significance Statement

The development of alcohol addiction is a progressive cycle that involves extended periods of heavy alcohol use. Therefore, we investigated the long-term effects of binge-like alcohol consumption on layer V pyramidal neurons in the medial prefrontal cortex (mPFC), a brain region involved in high-order executive processes, including impulsivity. We show that the long-term alcohol consumption increases the dendritic arborization of pyramidal neurons in layer V of the mPFC. These changes were also accompanied by significantly increased spine densities and excitatory synaptic activity in these neurons. Our study also highlights differences between long-term and chronic short-term alcohol intake on mPFC structure and function, adding to the importance of implementing long-term drinking models to better understand neuroadaptations facilitating the transition to dependence.

Introduction

Long-term alcohol use has significantly different effects on the brain compared with short-term exposure (Koob and Volkow, 2010). Prolonged alcohol use often involves repeated cycles of binge-like intake and abstinence, which produces adaptive changes in the brain that alter decision-making and impulsivity, and that sensitize behavioral responses to negative symptoms of withdrawal (Koob and Volkow, 2010). These effects also produce differential responses to pharmaceutical interventions compared with short-term intake (Steensland et al., 2007; Patkar et al., 2016). Prolonged alcohol use is thought to induce changes in a number of brain circuits and neurochemical pathways that facilitate the transition to dependence. In particular, accumulating evidence suggests that heavy alcohol use alters the activity and structure of the medial prefrontal cortex (mPFC; Holmes et al., 2012; Kroener et al., 2012; Kim et al., 2015).

The mPFC forms part of a complex neural circuit involved in high-order executive processes, including planning, decision-making, and control over impulsivity (Dalley et al., 2004; Crews and Boettiger, 2009; Goldstein and Volkow, 2011). The mPFC sends an organized network of efferent connections to subcortical regions controlling affective and motivated behaviors (Ongür and Price, 2000). Additionally, the mPFC exerts top-down regulation of subcortical sites, including the extended amygdala, which are sensitive to long-term alcohol use (Koob, 2013) and are disrupted during withdrawal (George et al., 2012). Recent studies in rodents have shown that excessive alcohol exposure affects mPFC pyramidal neurons (Holmes et al., 2012; Kroener et al., 2012; Kim et al., 2015). Moreover, results from human imaging studies have shown differences in PFC composition and functionality from alcoholics, including heightened responses to cues associated with alcohol (Grüsser et al., 2004; Myrick et al., 2004). Long-term alcohol consumption may also

facilitate PFC-mediated cognitive impairments, leading to an inability to maintain executive control over impulsivity and/or self-limit alcohol intake (Goldstein et al., 2004).

Recent investigations have highlighted the contrast between short-term and long-term ethanol treatment on mPFC pyramidal neuronal activity. Short-term application of ethanol to *ex vivo* brain slices has been shown to cause depolarization of mPFC pyramidal neurons and reduce NMDA-mediated postsynaptic currents (Weitlauf and Woodward, 2008; Woodward and Pava, 2009). Conversely, a longer 3 week regimen of intermittent ethanol vapor [i.e., chronic intermittent ethanol (CIE)] exposure demonstrated increased NMDA-mediated postsynaptic currents and spike timing-dependent plasticity (Kroener et al., 2012). The induction of alcohol dependence with CIE administration has also revealed changes in mPFC pyramidal neuron morphology following short-term exposure (Holmes et al., 2012; Kim et al., 2015). A modest increase in the density of mature spines in basal dendrites (Kroener et al., 2012) and hypertrophy of apical dendrites from layer V pyramidal neurons (LVPNs) were observed following 3–4 weeks of CIE treatment (Holmes et al., 2012). A longer CIE regime (7–10 weeks) revealed a greater level of dendritic hypertrophy and spine density increases in layer 2/3 pyramidal neurons, suggesting that long-term ethanol intake may have a greater effect on mPFC structure compared with short-term exposure (Kim et al., 2015).

While these studies have provided important insights into the effects of chronic ethanol exposure via passive administration, the effects of voluntary ethanol consumption on LVPN morphology and physiology following long-term access remain unknown. Because the choice to voluntarily consume ethanol following prolonged use is thought to result from mPFC dysfunction, which, in part, leads to a loss of control and an inability to self-limit intake, we used an intermittent access, two-bottle choice drinking paradigm in rats (Simms et al., 2008) to determine the effect of long-term ethanol consumption on mPFC LVPN synaptic activity and morphology. This well validated, voluntary access model produces escalating binge-like patterns of ethanol consumption, behavioral intoxication, and withdrawal symptoms during periods of abstinence, all of which are indicators of alcohol dependence (Carnicella et al., 2014). Because recent reports show that pharmaceutical interventions produce differential responses in rodents following short- and long-term binge-like consumption of ethanol (Steensland et al., 2007; Patkar et al., 2016), we gave rats extended access (10 weeks) to ethanol using the voluntary intermittent two-bottle choice model. We then recorded synaptic currents and neurobiotin (NB)-filled mPFC LVPNs in brain slices from long-term ethanol-consuming rats, comparing their synaptic physiology and morphology to LVPNs from age-matched water-drinking controls. We show that long-term, binge-like consumption of ethanol enhances spontaneous EPSC frequency and spine densities, and significantly increases the dendritic arbor length of mPFC LVPNs. These long-term effects suggest that alterations

Received August 19, 2016; accepted November 17, 2016; First published November 30, 2016.

The authors declare no competing financial interests.

Author contributions: P.M.K., M.J.F., M.C.B., and S.E.B. designed research; P.M.K., M.J.F., and M.S. performed research; M.C.B. and S.E.B. contributed unpublished reagents/analytic tools; P.M.K., M.J.F., and A.B. analyzed data; P.M.K., M.J.F., M.S., A.B., M.C.B., and S.E.B. wrote the paper.

This research was supported by Department of Health, National Health and Medical Research Council Grant 1061979 (to S.E.B. and M.C.B.); and Australian Research Council Grant FT1110884 (to S.E.B.). M.J.F. is supported by an Early Career (CJ Martin) Fellowship from the National Health and Medical Research Council.

Acknowledgments: We thank Dr. Shaun Walters for invaluable assistance with the imaging component of this study, and Joan Holgate for technical help with the BEC assays.

Correspondence should be sent to either of the following: Selena E. Bartlett, Translational Research Institute, Institute for Health and Biomedical Innovation, Faculty of Health, Queensland University of Technology, Brisbane 4000, QLD, Australia, E-mail: selena.bartlett@qut.edu.au; or Mark Bellingham, School of Biomedical Science, University of Queensland, Brisbane 4072, QLD, Australia, E-mail: mark.bellingham@uq.edu.au.

DOI:<http://dx.doi.org/10.1523/ENEURO.0248-16.2016>

Copyright © 2016 Klenowski et al.

This is an open-access article distributed under the terms of the Creative Commons Attribution 4.0 International, which permits unrestricted use, distribution and reproduction in any medium provided that the original work is properly attributed.

in mPFC LVPN activity and structure are important factors contributing to the development of alcohol dependence.

Materials and Methods

Ethics statement

All experimental procedures were approved by The University of Queensland and the Queensland University of Technology Animal Ethics Committees and complied with the policies and regulations regarding animal experimentation and other ethical matters (Drummond, 2009). They were conducted in accordance with the Queensland Government Animal Research Act 2001, associated Animal Care and Protection Regulations (2002 and 2008), as well as the Australian Code for the Care and Use of Animals for Scientific Purposes, 8th Edition (National Health and Medical Research Council, 2013).

Animals and housing

Five-week-old (adolescent) male Wistar rats (Animal Resource Center) were housed individually in ventilated dual-level Plexiglas cages. The rats were housed in a climate-controlled (22–24°C), 12 h reversed light/dark cycle (lights off at 9:00 A.M.) room and were given access to standard rat chow and water *ad libitum*. All rats were acclimatized to the housing conditions, handling, and reverse light cycle for 1 week prior to the start of treatment.

Intermittent access two-bottle choice drinking paradigm

We used the intermittent access 20% ethanol two-bottle choice paradigm described in the study by Simms et al. (2008) and adapted from Wise (1973). Briefly, solutions were presented in 300 ml graduated plastic bottles with stainless steel drinking spouts, inserted through two grommets in the front of the cage following commencement of the dark/light cycle. The weight of each bottle was recorded to the nearest 0.1 g prior to presentation. For the ethanol group ($n = 10$), one bottle containing water and a second bottle containing 20% ethanol (v/v) were presented simultaneously. The placement of the 20% ethanol bottle was switched at every presentation to prevent side preference. Bottles were weighed at 30 min, 2 h, and 24 h after presentation, and measurements were taken to the nearest 0.1 g. After 24 h, the ethanol bottle was replaced with a water bottle that was available for the next 24 h. This pattern was repeated three times per week for 10 weeks. The rats had unlimited access to water on all other days. The weight of each rat was also measured to calculate the grams of ethanol intake per kilogram of body weight prior to each ethanol presentation. A separate group of age-matched male control rats ($n = 10$) were given access to water in both bottles (i.e., no ethanol) under the same conditions described above. The mean body weights of control and ethanol-consuming rats following 10 weeks of drinking were 574.0 ± 9.4 and 534.4 ± 20.8 g, respectively. No difference in the increase in total body weight between control and ethanol groups was observed over the drinking period (control group, 359.1 ± 8.9 g; ethanol group, 331.7 ± 20.8 g; $p = 0.24$).

Blood ethanol concentrations

Blood ethanol concentrations (BECs) were measured after 9 weeks of ethanol consumption. Thirty minutes after the commencement of a standard intermittent access session, the bottles were removed, the rat was anaesthetized, and 70–100 μ l of tail blood was collected into an EDTA-coated tube. The blood was centrifuged at 4°C for 20 min at 4000 rpm, and the plasma was separated into aliquots and stored at –80°C until assayed. The nicotinamide adenine dinucleotide-ethanol dehydrogenase spectrophotometric assay was used to measure blood ethanol concentration, as previously described (Zapata et al., 2006; Santos et al., 2013). All reagents used in this assay were purchased from Sigma-Aldrich. BECs were calculated using a standard curve, and all samples and standards were run in triplicate.

Slice preparations

Following the last drinking session, rats were transferred from the animal facility to the School of Biomedical Sciences, University of Queensland (St. Lucia, QLD, Australia). Rats were transported by vehicle from the animal facility with their usual handler in a transport box with litter from their home cage at the end of their active (dark) cycle. Rats were then kept in a cage with litter from their home cage, over the course of the next light cycle. Rats were given overnight to recover. The next day, the rats were sacrificed by sodium pentobarbitone overdose (60–80 mg/kg, i.p.; Vetcare) and then decapitated. The brain was quickly removed and bathed in ice-cold high-Mg²⁺ Ringer's solution that contained the following (in mM): 130 NaCl, 3 KCl, 26 NaHCO₃, 1.25 NaH₂PO₄, 5 MgCl₂, 1 CaCl₂, and 10 D-glucose (osmolarity, ~300 mOsm; Vapro 5520 osmometer, Wescor; Bellingham and Berger, 1996). Ringer's solution was continuously bubbled with 95% O₂/5% CO₂ to maintain pH at 7.4. With the aid of a brain atlas (Paxinos and Watson, 2007), coronal sections (300 μ m thick) containing the mPFC (2.2–4.2 mm from bregma) were cut using a vibratome (Leica VT 1200S, Leica Biosystems). Cut slices were transferred from ice-cold high-Mg²⁺ Ringer's solution to the same solution warmed to 34°C in a water bath and incubated for 60 min. The sections were then moved to a normal Ringer's solution (same as above, except for 1 mM MgCl₂, 2 mM CaCl₂) and kept at room temperature (22–24°C) for 30 min prior to the start of recording and labeling.

Electrophysiology

Patch electrodes were pulled from borosilicate glass capillaries (Vitrex Modulohm, Edwards Medical) giving a tip resistance of ~3–4 M Ω . The tip of the electrode was filled with 2% NB (Vector Laboratories) in an artificial intracellular solution containing the following (in mM): 135 Cs⁺-methanesulfonate, 6 KCl, 1 EGTA, 2 MgCl₂, 5 Na-HEPES, 3 ATP-Mg²⁺, 0.3 GTP-Tris, pH 7.25 with KOH, osmolarity of 305 ± 5 mOsm (Kanjan and Bellingham 2013). The electrode was then backfilled with the same intracellular solution without NB. A single brain slice was placed in a tissue chamber on a Nikon E600FN micro-

scope fitted with infrared differential interference contrast optics, and continuously superfused (1–2 ml/min) with the normal Ringer's solution at room temperature (22–24°C). The tissue was stabilized with the aid of a metal mesh, and recording electrodes were viewed on a monitor through a 60× water-immersion objective and infrared video camera (Hamamatsu). Recordings and voltage pulse protocols were made with an Axopatch 1D amplifier (Axon Instruments). Data were acquired at a sampling rate of 10 kHz and low-pass filtered at 2 kHz, using PClamp 10.2 software and a Digidata 1332A digitizer (Axon Instruments). Large cell bodies of individual LVPNs within the mPFC (van Aerde and Feldmeyer, 2015) were targeted visually, and a patch-electrode was advanced toward the cell soma using a micromanipulator (MPC-200, Sutter Instrument Company). The electrode tip was placed against the neuronal soma, and then gentle suction was applied until a stable seal of preferably >300 MΩ was obtained.

The semi-loose seal NB electroporation procedure was modified from that described for brainstem motor neurons (Kanjhan and Bellingham, 2013). Square-wave voltage steps (0.5 s, 1 Hz) of 5–25 mV that generated current pulses of 300–500 pA were applied for 6–9 min until rupturing of the membrane occurred. If a tight seal formed (>1 GΩ) during suction through the pipette, the same pulses were applied until membrane rupture, when pulses were stopped and spontaneous EPSCs (sEPSCs) and spontaneous IPSCs (sIPSCs) were recorded at holding membrane potentials of –70 and 0 mV, respectively. Synaptic currents were recorded in 2 min epochs and analyzed off-line using PClamp 10.2 software. Between 100 and 1000 events were analyzed from each cell to determine electrophysiological properties. Input resistance was measured using the slope of the current–voltage curve at holding voltages of 0, –20, and –70 mV, as previously described (van Zundert et al., 2008). The input resistance was measured during the experiment following 4–6 min of recording. Synaptic currents were recorded for a minimum of 12 min, with NB electroporation lasting for a minimum of 3 min, followed by a recovery period of 5–10 min where the NB was allowed to diffuse to the extremities of the dendrites.

Imaging and morphologic quantification

After filling, sections were left in the bath for a minimum of 5 min to allow the NB to diffuse. The sections were then fixed in 4% paraformaldehyde in 0.1 M PBS, pH 7.4, at room temperature for 30 min. Each section was then washed three times in 0.1 M PBS and transferred into a PBS blocking solution containing 4% bovine serum albumin and 0.5% Triton X-100, then incubated overnight at 4°C. To visualize the NB, sections were incubated for 4 h at 4°C in Cy3-streptavidin (1:500 in blocking solution; Sigma-Aldrich). The labeling quality was determined with a standard fluorescence microscope (BX50, Olympus). Slices were then washed in 0.1 M PBS and mounted on slides (Menzel-Gläser) in glycerol-based *p*-phenylenediamine mounting medium and coverslipped (Menzel-Gläser).

Morphological properties of the mPFC LVPNs filled with NB were analyzed from stacks of confocal images obtained at 63× magnification in a manner similar to those of previous studies (Fogarty et al., 2015; Klenowski et al., 2015). Images containing total dendritic arbors were acquired on a Leica TCS SP8 confocal microscope using a Leica 63×/1.3 numerical aperture glycerol immersion objective with a voxel size of 0.18 × 0.18 × 0.5 μm/pixel (*x*-, *y*-, and *z*-dimensions). Image *z*-stacks of between 100 and 180 images were acquired at a *z*-separation of 0.5 μm. For spine quantification, we obtained images with the same objective at 2.5 zoom. The voxel size for spine images was 0.07 × 0.07 × 0.30 μm/pixel (*x*-, *y*-, and *z*-dimensions). Image *z*-stacks of dendrites with spines contained between 25 and 135 images acquired at a step size of 0.3 μm. Morphological properties (dendritic branching, length, and dendritic spines) and Sholl analysis (Sholl, 1953) of filled cells were performed using NeuroLucida software (MBF Bioscience) in a manner identical to previous reports (Fogarty et al., 2015; Klenowski et al., 2015, 2016). For Sholl analysis, the center of concentric spheres was defined as the center of the soma, and a 20 μm radius interval was used. All neurons included for analysis showed high-quality filling and contained an intact basal or apical (or both) dendritic arbors. Only large-bodied neurons that were a minimum of 400 μm away from the pia and/or contained an apical dendrite pointing toward the pia were included in the analysis (Gabbott et al., 1997; van Aerde and Feldmeyer, 2015). An entire arbor consisted of the entirety of the length of the dendritic trees emanating from the neuronal soma. A dendritic tree consisted of all of the branches emanating from a single primary (first-order) branch extending from the neuronal soma (Larkman and Mason, 1990). Dendritic processes were classified as spines only if their length was not >6 μm (Harris and Kater, 1994). All neuronal tracing and analysis of synaptic currents was conducted in a blinded fashion.

Statistical methods

The mean and SEM were calculated for each dataset. Where indicated, unpaired Student's two-tailed *t* tests or two-way ANOVAs with Bonferroni post-tests were conducted for all analyses involving the comparison of group means. The Kolmogorov–Smirnov test was used to compare cumulative frequency distributions. Correlations were performed with Pearson coefficients. All analyses were performed using Prism 6 (GraphPad). Statistical significance was accepted at *p* < 0.05, and values are reported to two significant figures in text and tables. All data in the Results section are presented as the mean ± SEM.

Results

Rats given access to ethanol showed binge-like ethanol consumption and increased preference for ethanol over water

Rats given intermittent access to ethanol escalated their total intake by 58% over the exposure period

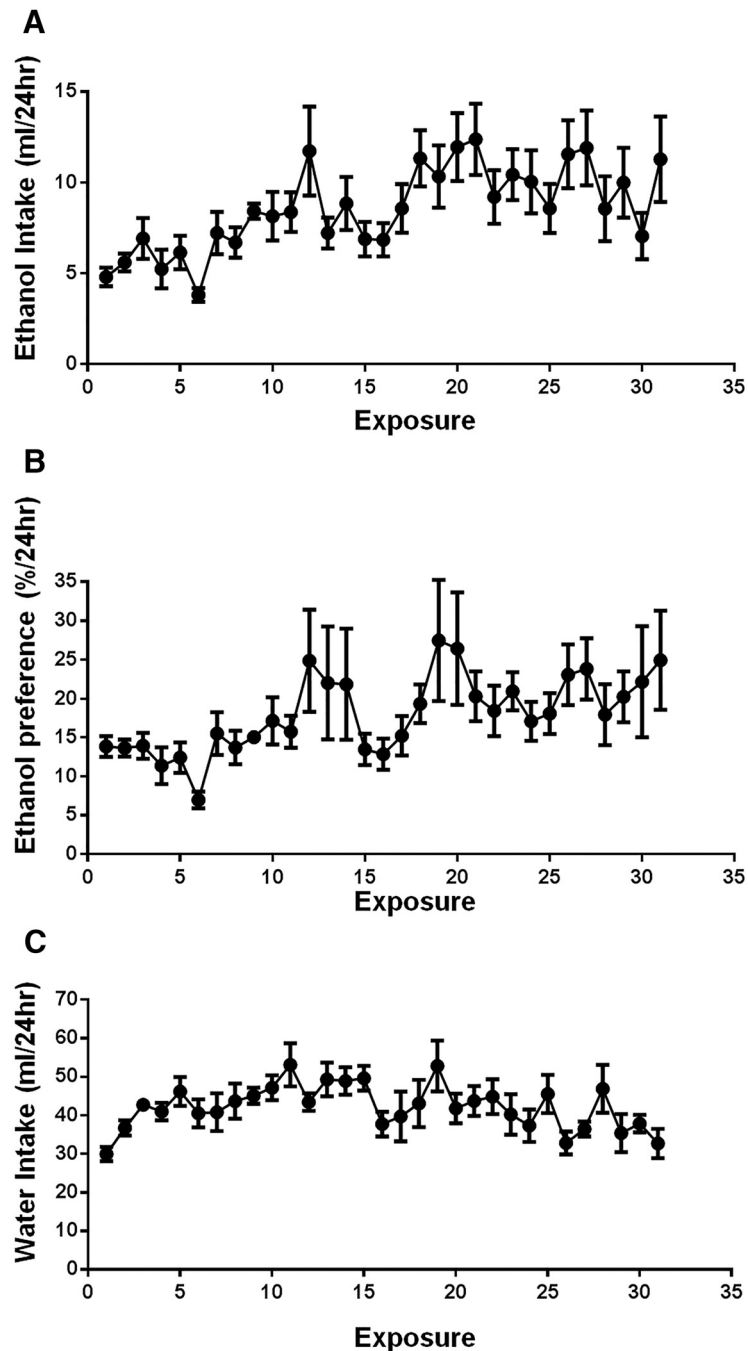


Figure 1. Intermittent access to ethanol facilitates binge patterns of consumption. **A**, **B**, Rats ($n = 10$) given intermittent access to ethanol escalated their total intake in a binge-like manner (**A**) and increased their preference for ethanol (**B**) during the drinking period. Following 9 weeks of prior ethanol consumption (~27 exposures), rats consumed on average 2.10 ± 0.40 g/kg and reached blood ethanol concentrations of 0.09 ± 0.01 g/dl during the first 30 min of ethanol presentation.

(Fig. 1A). Additionally, the intermittent two-bottle choice model facilitated a 44% increase in the preference for ethanol over water during the drinking sessions (Fig. 1B). Water consumption over the ethanol exposure period is shown in Figure 1C. Following 9 weeks of exposure, this drinking behavior resulted in a mean consumption of 2.10 ± 0.40 g/kg during the first 30 min of ethanol presentation, which produced mean BECs of 0.09 ± 0.01 g/dl ($n = 9$). This corresponds to an average blood alcohol concen-

tration observed in humans after six standard drinks consumed in <2 h.

Long-term ethanol consumption caused increased excitatory synaptic neurotransmission and neuronal input resistance in mPFC LVPNs

To determine the effects of long-term, binge-like ethanol consumption on functional synaptic activity, we analyzed sEPSCs and sIPSCs recorded from mPFC LVPNs

Table 1: Spontaneous EPSCs, IPSCs, and intrinsic parameters of LVPNs within the mPFC

Parameter	Water-consuming controls (n)	Ethanol-consuming rats (n)	p value
sEPSC frequency (Hz)	1.9 ± 0.2 (21)	2.6 ± 0.3 (25)	0.04*
sEPSC amplitude (pA)	-13.2 ± 0.7 (21)	-13.9 ± 0.9 (25)	0.49
sEPSC rise time (ms)	2.7 ± 0.1 (21)	2.6 ± 0.1 (25)	0.44
sEPSC half-width (ms)	3.0 ± 0.2 (21)	3.1 ± 0.1 (25)	0.82
sIPSC frequency (Hz)	1.2 ± 0.1 (24)	0.9 ± 0.1 (24)	0.09
sIPSC amplitude (pA)	26.6 ± 1.6 (24)	24.4 ± 1.4 (24)	0.31
sIPSC rise time (ms)	4.2 ± 0.34 (24)	5.5 ± 0.5 (24)	0.03*
sIPSC half-width (ms)	9.7 ± 0.7 (24)	11.0 ± 0.8 (24)	0.24
Input resistance (MΩ)	206 ± 27 (16)	269 ± 18 (24)	0.047*

All data presented as the mean ± SEM.

* $p < 0.05$, unpaired two-tailed Student's t test.

obtained from rats consuming water or ethanol (Table 1). The sEPSC frequency was significantly increased by 35% in rats consuming ethanol compared with water-consuming controls ($*p = 0.04$; Table 1; Fig. 2C,D,F). Long-term ethanol consumption had no effect on sEPSC amplitude, rise time, or half-width (Table 1). Comparison of sIPSC frequency, amplitude, and half-width revealed no difference between the two groups; however, we did observe a 29% increase in rise time in ethanol-consuming rats compared with controls ($*p = 0.03$; Table 1). Additionally, the cumulative frequency distributions for the interevent interval of both the sIPSCs (Fig. 2G) and sEPSCs (Fig. 2H) were significantly different between the ethanol and water groups ($*p = 0.03$, sIPSC; $*p = 0.01$, sEPSC). The cumulative frequency distribution of sEPSC amplitude was also significantly different between the groups ($*p = 0.04$; Fig. 2J). To further assess whether amplitudes have any effect on the likelihood of current detection, we plotted sIPSC amplitudes against sIPSC frequency (Fig. 2I), sEPSC amplitude against sEPSC frequency (Fig. 2J), and compared the respective linear regressions. For both sIPSCs and sEPSCs, there was no difference between linear regressions in the ethanol and water control groups ($p = 0.13$, sIPSC slope; $p = 0.92$, sIPSC elevation; $p = 0.37$, sEPSC slope; $p = 0.58$, sEPSC elevation; Fig. 2K,L).

Intrinsic neuronal excitability of mPFC LVPNs was also altered by long-term ethanol consumption. Neuron input resistance significantly increased by 31% for mPFC pyramidal neurons from ethanol-drinking rats, compared with water-consuming controls ($*p < 0.05$; Table 1). As this could influence our electrophysiological and morphological measurements, we assessed correlations between synaptic currents and dendritic properties. We observed no correlation between input resistance and EPSC frequencies in either control ($r^2 = 0.0066$, $p = 0.79$) or ethanol-treated ($r^2 = 0.0007$, $p = 0.90$) rats. Similarly, there were no correlations between input resistance and dendritic spine density in either control ($r^2 = 0.0127$, $p = 0.74$) or ethanol-treated ($r^2 = 0.0177$, $p = 0.57$) rats. Together, these results indicate that there is minimal confounding of our measurements between the control and ethanol populations of neurons with differing input resistance.

Increased total dendritic arbor and basal dendritic arbor length in mPFC LVPNs of ethanol-consuming rats

A persistent increase in the excitatory synaptic drive onto mPFC LVPNs and their input resistance is likely to relate to changes in the somatodendritic surface area and volume of individual mPFC LVPNs after ethanol consumption (van Zundert et al., 2008; Fogarty et al., 2016). We therefore investigated the dendritic morphology of the mPFC LVPNs in response to these altered synaptic inputs. LVPNs from the prelimbic and infralimbic subdivisions of the mPFC (Fig. 3) were filled with NB and were pooled together for analysis (Fig. 3). There was no difference in neuronal soma volume (calculated using volume of an ellipsoid) between the ethanol- and water-consuming groups ($p = 0.41$; Table 2). The total dendritic arbor length of mPFC LVPN dendrites increased by 41% in ethanol consumers, compared with water-consuming controls ($*p = 0.02$; Table 2; Fig. 4C). Comparison of the apical arbors of LVPNs between the groups showed no significant change in the dendritic length ($p = 0.08$; Table 2; Fig. 4E) or maximum apical reach, as measured by the distance from the soma to the longest apical dendritic termination at the pia ($p = 0.62$; Table 2). Conversely, the total basal dendritic arbor length of LVPNs was increased by 42% in ethanol-consuming rats compared with controls ($**p < 0.01$; Table 2; Fig. 4D), and the mean basal tree arbor length of LVPNs from the ethanol-consuming group was increased by 44% compared with water-consuming controls ($**p < 0.01$; Table 2). Sholl analysis showed a significant increase in dendritic length and the number of intersections in both the apical ($****p < 0.0001$; Fig. 5A,B) and basal (length: Fig. 5C, $****p = 0.0002$; interactions: Fig. 5D, $**p = 0.001$) dendritic arbors from ethanol-consuming rats compared with controls. Post-tests revealed that apical dendrites 60–80 μm from the soma were longer ($*p = 0.01$) and exhibited more interactions between 40 and 60 μm ($**p = 0.007$) in the ethanol-consuming group compared with the control group. For basal arbors, increased length in the ethanol-consuming group compared with controls was observed in dendrites between 40 and 100 μm from the soma (40–60 μm , $*p = 0.04$; 60–80 μm , $****p = 0.0002$; 80–100 μm , $*p = 0.04$). Basal dendrites that were 40–80 μm from the soma exhibited more intersections in the

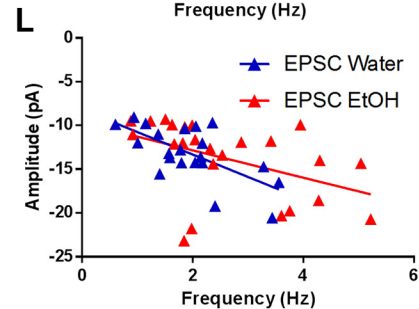
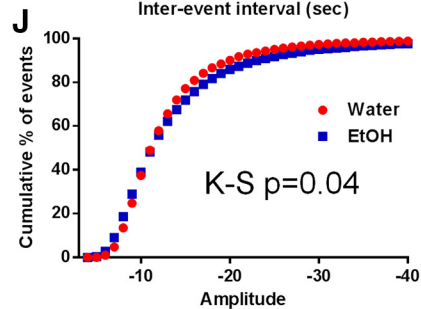
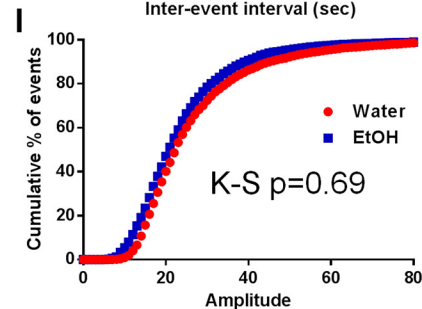
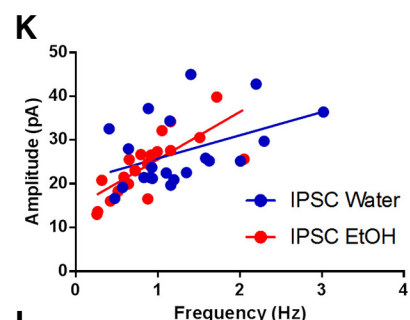
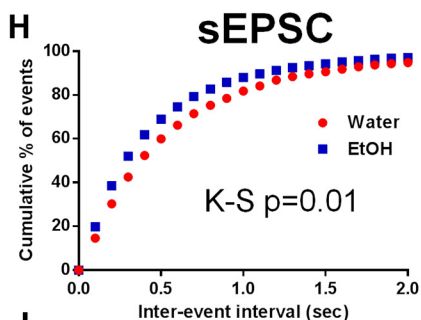
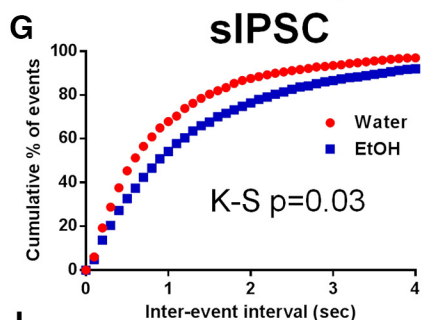
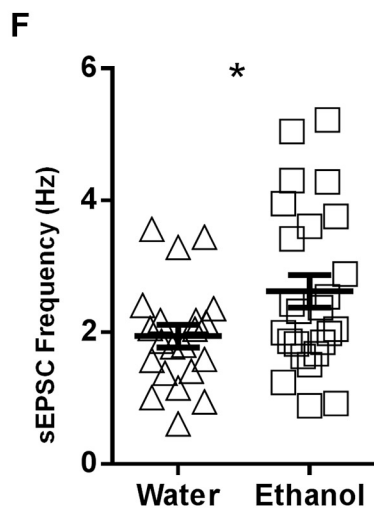
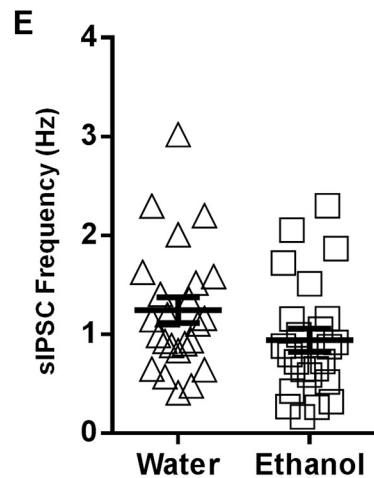
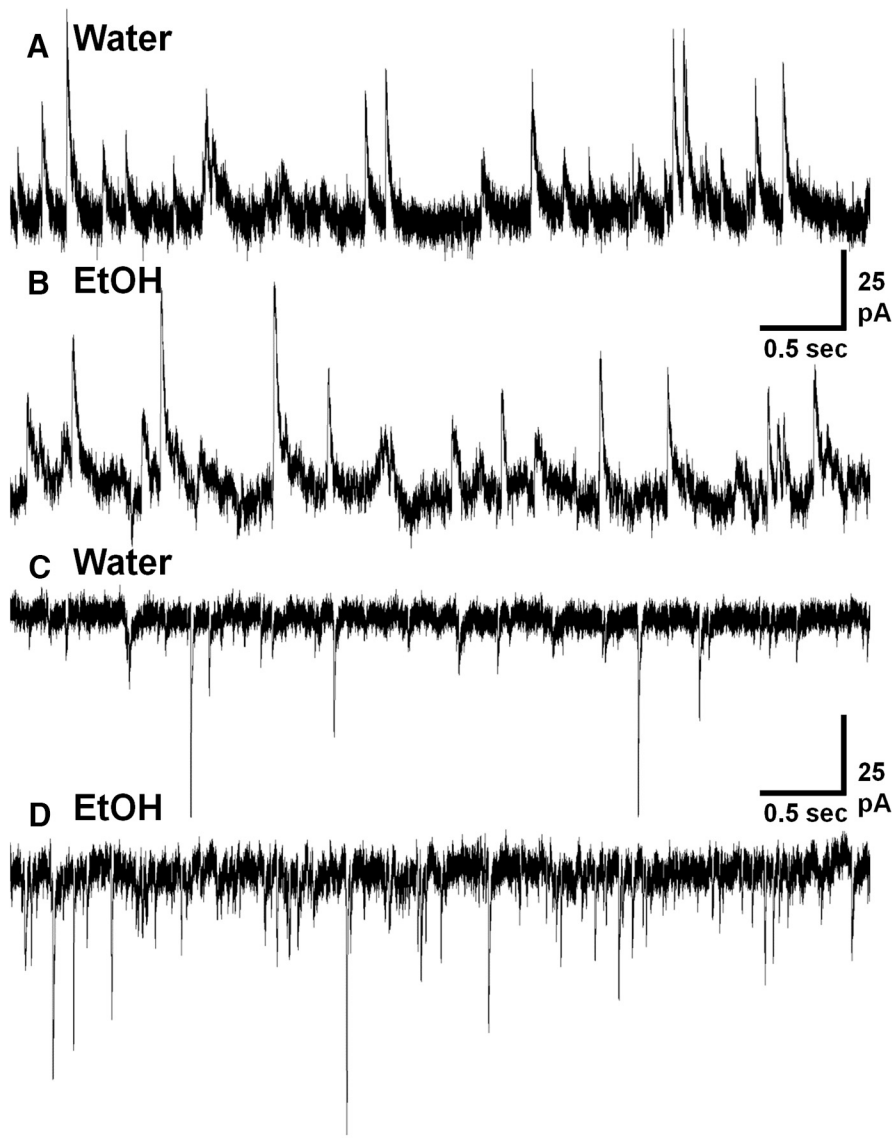


Figure 2. Increased EPSC synaptic drive on LVPNs from the mPFC in ethanol-consuming rats compared with water-consuming controls. Voltage-clamp whole-cell recordings showing an increase in the spontaneous EPSC frequency recorded from mPFC LVPNs in long-term ethanol-drinking rats compared with age-matched water-drinking controls at 16 weeks. **A–D**, Representative spontaneous IPSCs (upward deflections in **A** and **B**) and spontaneous EPSCs (downward deflections in **C** and **D**) recorded from mPFC LVPNs of control (**A**, **C**) and ethanol-consuming rats (**B**, **D**) are shown. **E**, **F**, Scatterplots with mean \pm SEM show unchanged spontaneous IPSC (**E**, $n = 21$) and increased spontaneous EPSC (**F**, $n = 25$, Unpaired two-tailed Student's t test, $*p < 0.05$) frequencies. Calibration: 25 pA, 500 ms. **G–J**, Cumulative frequency distributions of sIPSC and sEPSC interevent intervals and amplitudes are shown in **G–J**, respectively, with sIPSC interevent interval (**G**), sEPSC interevent interval (**H**), and sEPSC amplitude (**J**) distributions being significantly different (Kolmogorov–Smirnov test). **K**, **L**, Correlation x - y plots and linear regressions of sIPSC amplitude against frequency (**K**) and sEPSC amplitude against frequency (**L**), with neither the slope nor the elevations of the regression being significantly different in either case between ethanol-consuming and water-consuming control groups.

ethanol-consuming rats compared with the water-consuming controls ($40\text{--}60 \mu\text{m}$, $***p = 0.0007$; $60\text{--}80 \mu\text{m}$, $**p = 0.002$).

Following the characterization of the gross morphology of mPFC LVPNs, we further analyzed the branch-order characteristics of their basal dendritic arbors, by quanti-

fying the number of dendritic segments per branch order and the mean length of dendritic segments per branch order (Fig. 6). We found an increased number of basal dendritic segments per branch order in the ethanol-consuming group compared with the control group (Fig. 6A, $****p < 0.0001$), with post-tests showing significant

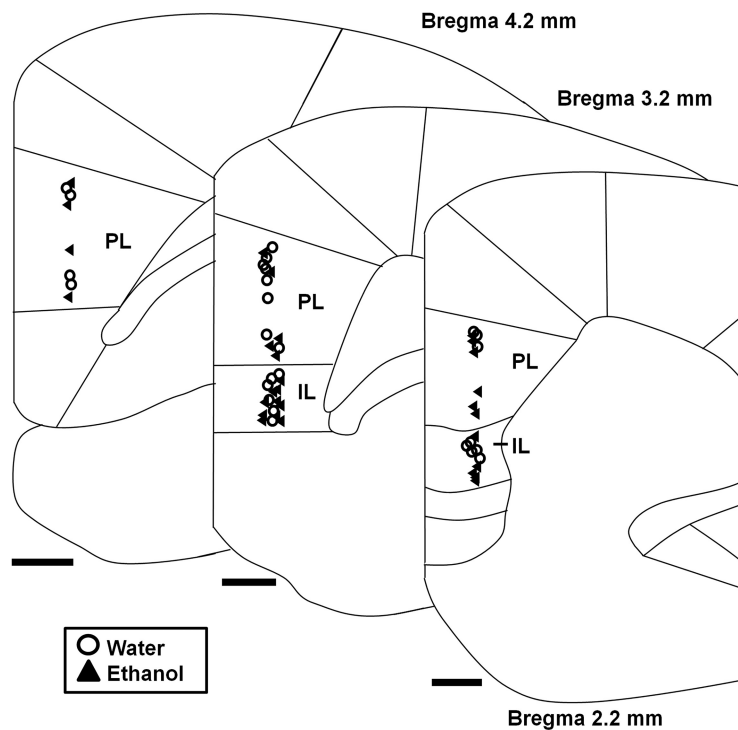


Figure 3. Cortical cytoarchitecture map showing locations of recovered mPFC LVPNs labeled with neurobiotin. Diagram shows the medial portion of the coronally sectioned cortex (2.2–4.2 mm from bregma), with demarcation of the prelimbic (PL) and infralimbic (IL) divisions of the mPFC outlined. The location of neurons from water-consuming control (circles, $n = 27$) and ethanol-consuming (triangles, $n = 26$) rats used for morphological assessment is evenly distributed both rostrocaudally and in the PL and IL regions. Scale bars, $500 \mu\text{m}$.

Table 2: General morphologic parameters of LVPNs within the mPFC

Parameter	Water-consuming controls (n)	Ethanol-consuming rats (n)	p value
Soma volume (μm^3)	1117 ± 112 (27)	1247 ± 109 (26)	0.41
Total dendrite length (μm)	3323 ± 476 (15)	4672 ± 275 (18)	0.02*
Mean apical tree length (μm)	1332 ± 146 (19)	1723 ± 158 (23)	0.08
Max apical terminal length (μm)	521 ± 29 (19)	541 ± 29 (23)	0.62
Total basal tree length (μm)	1965 ± 222 (25)	2798 ± 195 (25)	0.007***
Mean basal tree length (μm)	334 ± 40 (25)	481 ± 33 (25)	0.007***

All data are presented as the mean \pm SEM.
 $*p < 0.05$, unpaired two-tailed Student's t test.
 $**p < 0.01$, unpaired two-tailed Student's t test.

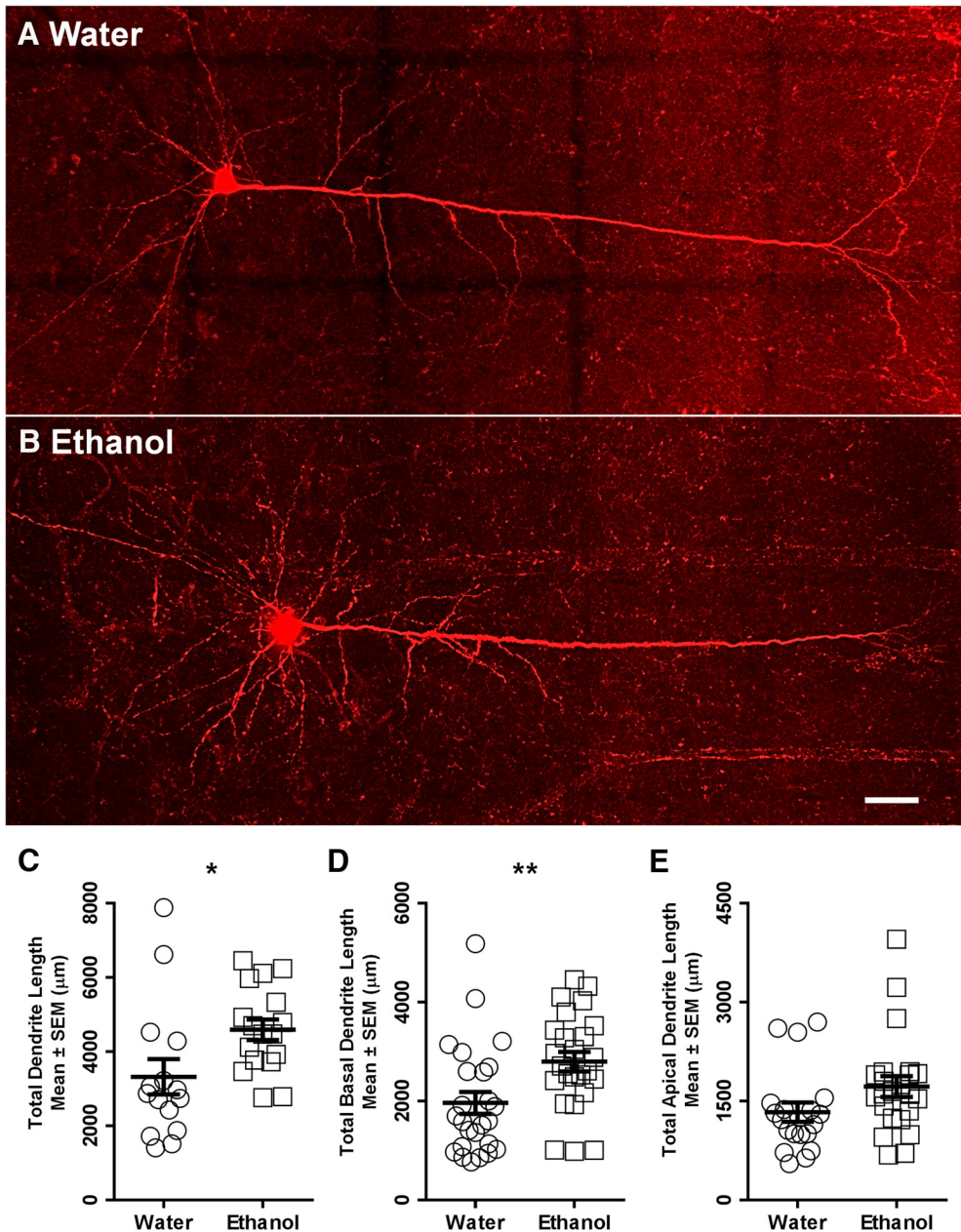


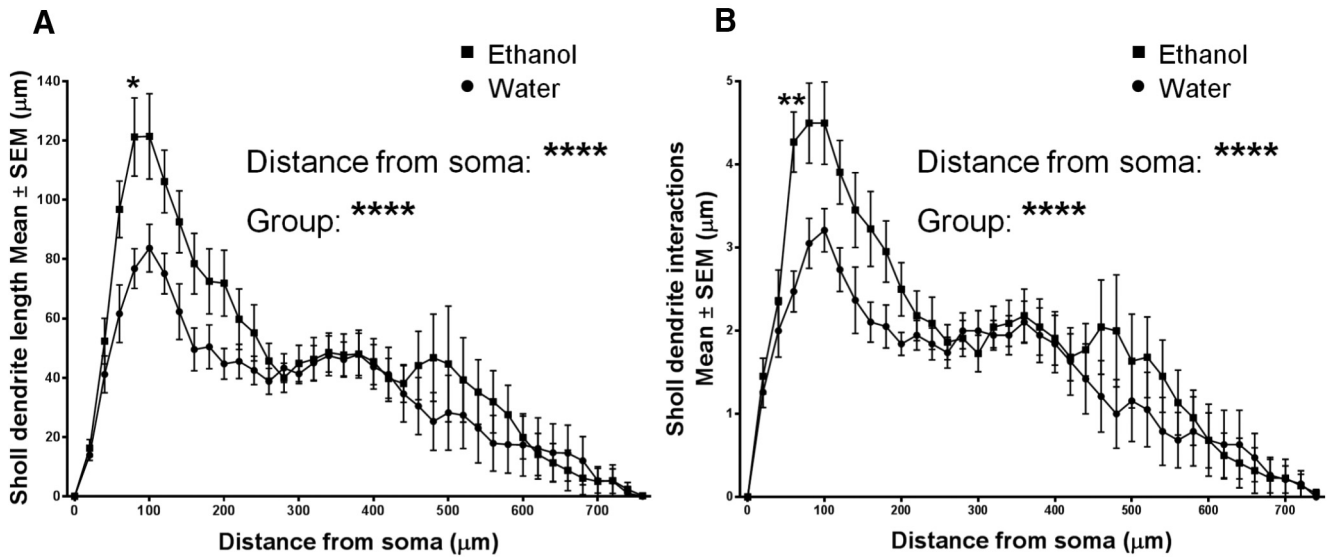
Figure 4. Increased total and basal dendritic arbors of LVPNs from the mPFC of ethanol-consuming rats compared with water-consuming controls. **A, B,** Images show 40 \times objective mosaics of mPFC LVPNs from water-consuming control rats (**A**) and ethanol-consuming rats (**B**). **C–E,** Scatterplots with mean \pm SEM of total dendritic length (water, $n = 15$; ethanol, $n = 18$), basal dendritic length (water, $n = 25$; ethanol, $n = 25$), and apical dendritic length (water, $n = 19$; ethanol, $n = 23$) showing significant increases in ethanol-consuming rats in **C** and **D**, but not in **E**. Unpaired two-tailed Student's t tests, $*p < 0.05$, $**p < 0.01$. Scale bar, 50 μm .

increases at third ($*p = 0.01$), fourth ($****p < 0.0001$), and fifth ($**p = 0.002$) branch orders. In addition, we found an increase in the mean length of basal dendritic segments per branch order between the ethanol-consuming and control groups (Fig. 6B, $****p = 0.0008$), with post-tests showing significant increases at fifth ($**p = 0.002$) and sixth or greater ($*p = 0.03$) branch orders. These data show that basal dendrite hypertrophy after long-term ethanol consumption is selectively targeted to tertiary or higher branch orders.

Increased total apical and basal spine density of mPFC LVPNs in ethanol-consuming rats compared with water-consuming controls

The increases in sEPSC frequency and in basal dendrite length could alter the number of presynaptic inputs onto the LVPNs in the mPFC. As dendritic spines are the morphological correlate of excitatory synapses in pyramidal neurons (Spruston, 2008), we quantified the dendritic spine densities of mPFC LVPNs from ethanol- and water-consuming groups.

Apical



Basal

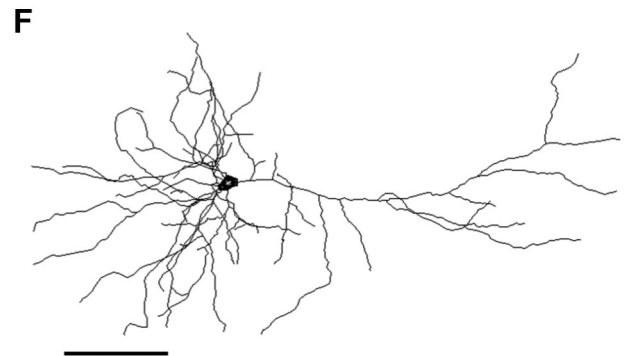
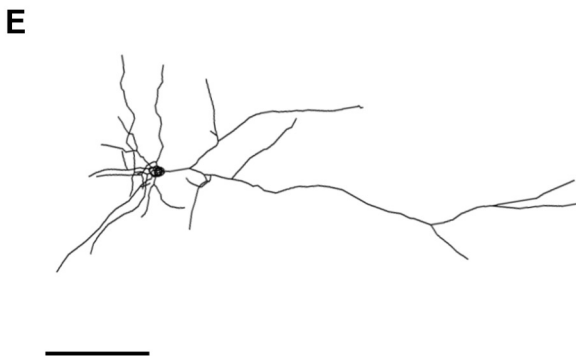
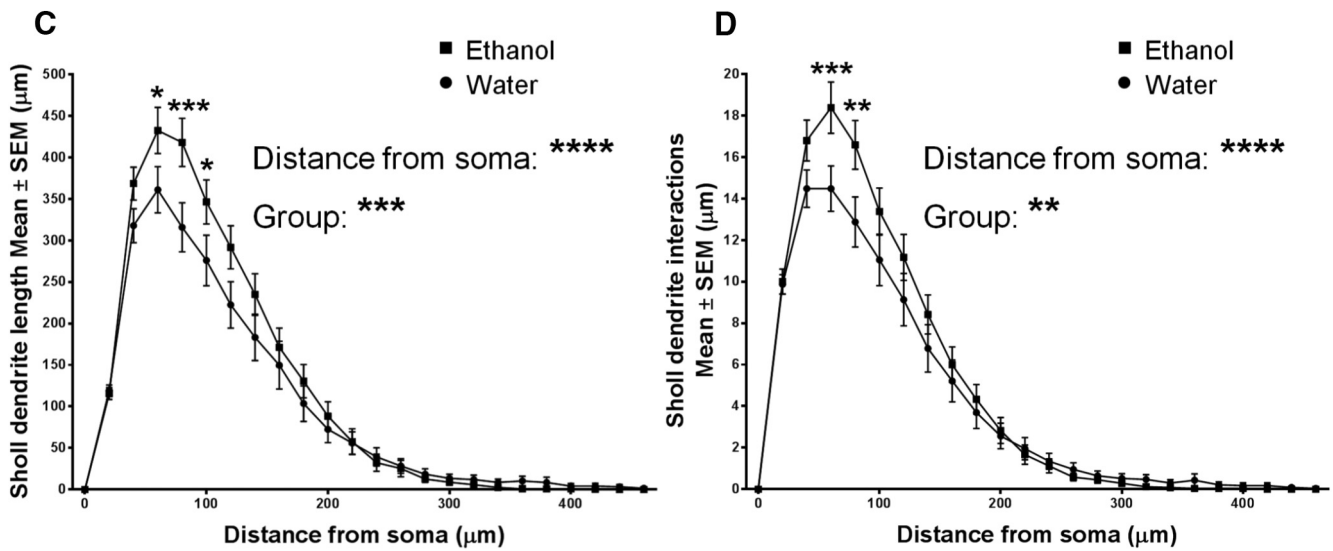


Figure 5. Sholl analysis shows increased length and branching of apical and basal dendrites from mPFC LVPNs of ethanol-consuming rats compared with water-consuming controls. **A–D**, Sholl analysis of mPFC LVPNs from ethanol- and water-consuming animals revealed a significant effect of ethanol on the length and branching of apical dendrites (**A, B**: water, $n = 19$; ethanol, $n = 23$) and basal dendrites (**C, D**: water, $n = 25$; ethanol, $n = 25$). An increased number of interactions and increased length at apical dendrites 40–60

continued

μm and 60–80 μm away from the soma, respectively, was observed in ethanol consumers compared with controls. For basal dendrites, increased branching and length were found over a range of dendrites that were between 40 and 100 μm away from the soma following long-term ethanol consumption. **E, F**, Representative traces of mPFC LVPNs from water-consuming (**E**) and ethanol-consuming (**F**) groups. Two-way ANOVAs with Bonferroni post-tests, $*p < 0.05$, $**p < 0.01$, $***p < 0.001$, $****p < 0.0001$. Scale bars, 100 μm .

The overall spine density per 100 μm of dendrite increased by 29% in the ethanol-consuming group compared with the control group ($*p = 0.03$; Table 3). By contrast with the selective increase in basal dendrite length and complexity, changes in spine density were seen in both apical and basal dendrites. The spine density per 100 μm of apical dendrite increased by 26% in ethanol consumers compared with water-consuming controls ($*p = 0.04$; Table 3; Fig. 7E). The basal dendrite spine density increased by 40% in LVPNs of ethanol-consuming rats compared with water-consuming controls ($***p < 0.001$; Table 3; Fig. 7F). Branch order analysis of basal dendrites showed a significant effect of ethanol consumption on spine density per branch order ($***p < 0.001$; Fig. 6C), with post-tests revealing significant increases at third ($*p = 0.04$) and fourth ($*p = 0.03$) branch orders. Together, our spine density data show that a significant level of structural plasticity is induced in mPFC LVPNs by extended periods of binge-like ethanol consumption.

Discussion

In this study, we have used a combination of behavioral, electrophysiological, and imaging techniques to provide a detailed analysis of mPFC LVPNs from long-term ethanol drinking and age-matched water-consuming control rats. Using a voluntary intermittent two-bottle choice drinking

paradigm that facilitated binge-like ethanol consumption, increased ethanol preference, and clinically relevant blood ethanol concentrations, we have been able to demonstrate for the first time the long-term effects of heavy alcohol consumption on mPFC LVPN morphology and physiology. Our analysis of postsynaptic currents revealed that long-term ethanol consumption induced a significant enhancement of sEPSC frequency in mPFC LVPNs. Long-term ethanol intake also induced considerable changes in intrinsic and morphological neuronal properties. Higher neuronal input resistance was accompanied by an increase in total dendritic arbor length and increased total, apical, and basal spine densities in mPFC LVPNs from long-term ethanol-consuming rats compared with controls. Our Sholl and branch-order analyses showed that dendritic restructuring induced by long-term ethanol consumption was primarily confined to the more distal dendrite branches that were between 40 and 100 μm away from the soma. These results provide further evidence to support an association between prolonged ethanol consumption and mPFC dysfunction.

In humans, long-term alcohol abuse is thought to cause adaptive changes in the brain that facilitate a behavioral state of dependence, which is characterized by compulsive drinking, an inability to self-limit intake and the development of a negative emotional state during

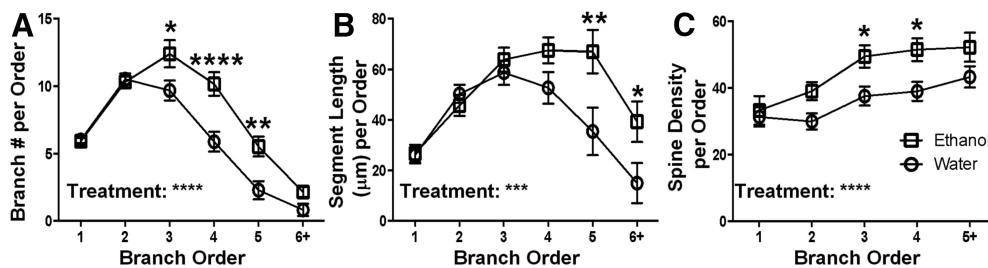


Figure 6. Basal dendrites show increased branch length and branch number, and increased spine density for distal branch orders in LVPNs from the mPFC of ethanol-consuming rats compared with water-consuming controls. **A**, A plot of the mean branch number per centrifugal branch order for basal dendrites, with significant increases for third-, fourth-, and fifth-order branches ($n = 25$). **B**, A plot of the mean segment length (in micrometers) per centrifugal branch order for basal dendrites, with increased segment length for fifth-order and sixth-order or greater branches ($n = 25$). **C**, A plot of the mean spine density (spines per 100 μm length) per centrifugal branch order ($n = 25$). Two-way ANOVAs with Bonferroni post-tests, $*p < 0.05$, $**p < 0.01$, $***p < 0.001$, $****p < 0.0001$.

Table 3: Spine density (spines per 100 μm of dendrite) parameters of LVPNs within the mPFC

Parameter	Water-consuming controls (n)	Ethanol-consuming rats (n)	p value
Total dendrite density	37.7 \pm 3.4 (15)	48.6 \pm 3.4 (18)	0.03*
Total apical density	35.2 \pm 3.1 (19)	44.4 \pm 3.0 (23)	0.04*
Total basal density	36.5 \pm 2.6 (25)	51.2 \pm 3.0 (25)	0.0006***

All data are presented as the mean \pm SEM.

* $p < 0.05$, unpaired two-tailed Student's t test.

*** $p < 0.001$, unpaired two-tailed Student's t test.

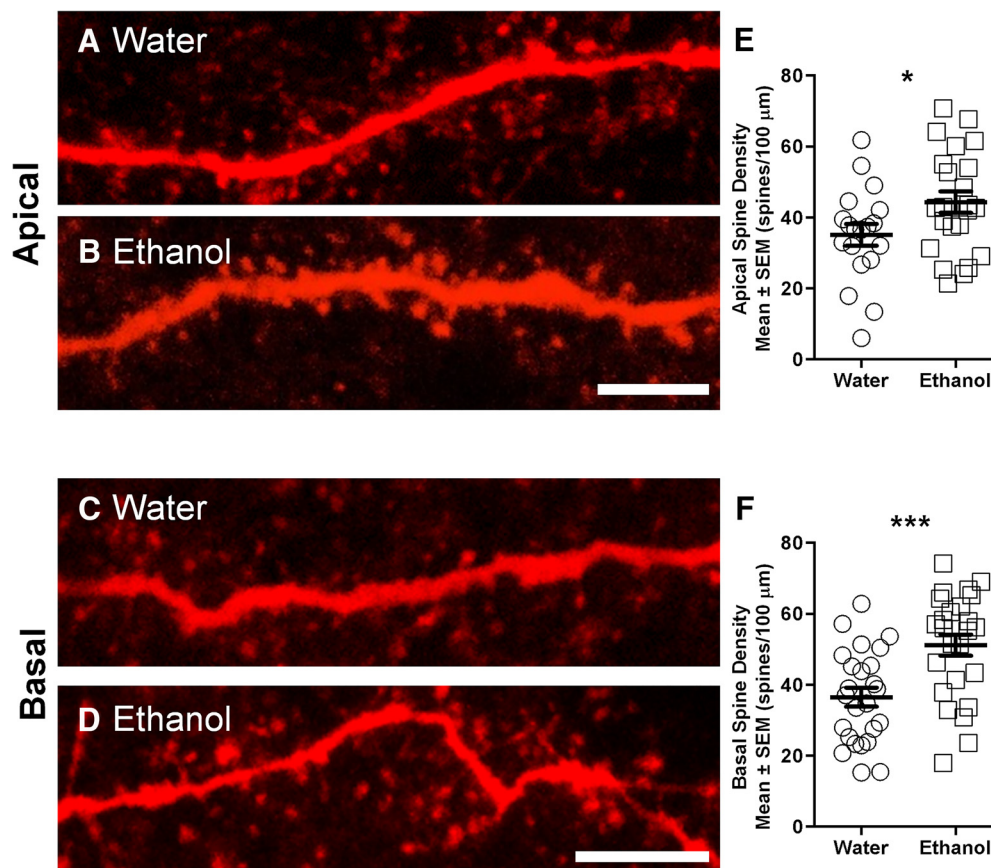


Figure 7. Increased dendritic spine density in both apical and basal dendrites of mPFC LVPNs from ethanol-consuming rats compared with water-consuming controls. **A, B**, High-magnification images of apical dendritic segments of mPFC LVPNs from water-consuming controls (**A**) and ethanol-consuming rats (**B**). **C, D**, High-magnification images of basal dendritic segments of mPFC LVPNs from water-consuming controls (**A**) and ethanol-consuming rats (**B**). **E, F**, Scatterplots with mean \pm SEM of total spine density per 100 μm of apical dendrite (water, $n = 19$; ethanol, $n = 23$) and basal dendrite (water, $n = 25$; ethanol, $n = 25$), respectively. Unpaired two tailed Student's t tests, $*p < 0.05$, $***p < 0.001$. Scale bars, 5 μm .

withdrawal (Koob and Volkow, 2010). Additionally, repeated cycles of binge drinking and abstinence are thought to play a key role in the development of alcohol dependence (Koob, 2013). Despite these observations, few studies have investigated the long-term effects of voluntary alcohol consumption, particularly at the cellular and synaptic levels. Not surprisingly, such long-term studies present technical challenges, particularly with regard to obtaining electrophysiology recordings in aged rodents. Because we have previously found that the length of alcohol consumption is an important factor driving the adaptive changes to alcohol (Steenland et al., 2007; Feduccia et al., 2014; Patkar et al., 2016), we implemented NB filling using a semi-loose seal (Klenowski et al., 2015) and electroporation method (Kanjhan and Bellingham, 2013), which has allowed us to obtain an adequate level of cell recovery and stable whole-cell configurations in mPFC LVPNs from 16-week-old rats, following intermittent access to ethanol for 10 weeks. Importantly, this exposure period is similar to previous work from our group, which has demonstrated differential pharmacological and neuronal effects following short-term (4 weeks) and long-term (10–12 weeks) consumption of ethanol (Steenland et al., 2007; Feduccia et al.,

2014; Patkar et al., 2016) and sucrose (Klenowski et al., 2016; Shariff et al., 2016).

Previous studies have highlighted the acute and chronic short-term effects of ethanol on the mPFC. Short-term application of ethanol to rat brain slices decreased NMDA-mediated EPSC activity of deep-layer prefrontal cortex pyramidal neurons and inhibited persistent activity during up-states (Tu et al., 2007; Weitlauf and Woodward, 2008). Conversely, chronic short-term ethanol treatment via vapor inhalation was shown to enhance excitatory activity of deep-layer mPFC pyramidal neurons by increasing NMDA-mediated, spike timing-dependent plasticity and the evoked NMDA/AMPA synaptic current ratio (Kroener et al., 2012). The effects of short-term vapor inhalation also changed the morphology of mPFC pyramidal neurons by inducing apical dendrite hypertrophy and increased spine density (Holmes et al., 2012; Kroener et al., 2012). Moreover, 4 d binge ethanol consumption treatment has been shown to modulate effectors of neurogenesis and to promote necrosis in the frontal cortex (Obernier et al., 2002; Crews and Nixon, 2009).

These studies have provided important insights into the sensitivity of the mPFC to acute or chronic short-term ethanol intake. Importantly, our study focused on long-

term ethanol-induced changes in mPFC LVPN structure and function, as long-term alcohol consumption produces additional responses that are critically involved in the development of alcohol dependence and that are lacking in short-term use. Additionally, we used the voluntary intermittent access two-bottle choice drinking model, which allows rats to choose whether or not to consume ethanol and how much ethanol they consume, unlike passive ethanol vapor administration, which is typically associated with higher BECs.

Results from human imaging studies have demonstrated reductions in PFC gray matter among drug-addicted subjects, including those addicted to alcohol (Fein et al., 2002; Chanraud et al., 2007). These changes are thought to contribute to cognitive deficits and impairment of executive functions that together facilitate compulsive drinking behavior (Goldstein et al., 2004; Goldstein and Volkow, 2011). However, the direct contribution of long-term alcohol use to these effects is difficult to interpret and can be hard to pin down, as human alcoholic individuals often present with various comorbidities that could influence changes in PFC composition.

Recent animal studies have begun to uncover the long-term effects of ethanol on the mPFC. Using a similar intermittent access two-bottle choice drinking paradigm, 6 weeks of ethanol consumption was shown to increase neuronal activity in the mPFC during withdrawal, as determined using global measurements of Fos expression (George et al., 2012). Additionally, extended CIE treatment for up to 10 weeks caused a significant increase in the dendritic branching and spine densities of basal and apical dendrites, but decreased the dendritic reach of layer II/III neurons (Kim et al., 2015). Our morphology data for LVPNs has revealed that long-term ethanol consumption causes a substantially greater level of dendritic changes compared with previous studies (Holmes et al., 2012; Kroener et al., 2012; Kim et al., 2015). Not only did mPFC LVPNs from long-term ethanol consuming rats show an increase in the total dendritic length, but significant lengthening and more complex branching patterns in basal dendrites were also observed. Our comprehensive assessment of basal dendrite branch-order architecture also pinpointed a significant increase in the number of third-, fourth-, and fifth-order branches and an increase in the mean length of fifth and sixth or greater branch orders in mPFC LVPNs from ethanol-consuming rats, compared with water-consuming controls. While long-term ethanol consumption caused less change in the gross morphology of apical dendrites, Sholl analysis did reveal a significant effect of long-term ethanol consumption on length and dendritic branching, similar to the level of dendritic restructuring observed in previous reports (Holmes et al., 2012; Kim et al., 2015). Although stress associated with the transport of the rats may have in part contributed to the observed differences, all animals in this study underwent the same transport protocol and were provided with a stable environment and time to acclimatize to the new environment in order to reduce this potential confound.

How these alterations affect the signal integration of synaptic inputs to mPFC following voluntary long-term ethanol consumption requires further investigation. Impaired neuronal processing may be due to increased attenuation of excitatory postsynaptic potential in the lengthened dendrites (Stuart and Spruston, 1998). Indeed, our dendritic and dendritic spine changes observed in voluntary ethanol-consuming rats may result in altered spatial and temporal summations (Williams and Stuart, 2002, 2003), perturbing action potential propagation to the axon initial segment and thus contributing to changed firing patterns from the mPFC to target structures (Spruston, 2008).

We found that mPFC LVPNs from long-term ethanol-consuming rats showed increases in the total, apical, and basal spine densities. In both the ethanol-consuming and water-consuming control groups, our quantification included examples of the full array of conventional dendritic spine classifications, including thin, stubby, and mushroom (Jones and Powell, 1969; Peters and Kaiserman-Abramof, 1970). Limitations in our confocal light microscopy (Harris et al., 1992; Arellano et al., 2007; Maiti et al., 2015) and the large variability and prevalence of intermediate spine forms precluded unequivocal categorization of our samples. Indeed, past reports argue that spines exist as a continuum of structures rather than as discrete units (Peters and Kaiserman-Abramof, 1970; Harris et al., 1992; Maiti et al., 2015). In addition to our dendritic spine density changes, increased sEPSC frequency and a reduction in the cumulative probability of the sIPSC interevent interval was also observed in mPFC LVPNs from ethanol-consuming rats compared with controls. These data are in line with previous observations showing enhancement of excitatory synaptic inputs, including NMDA-mediated increases in neuronal excitability and increased NMDAR expression in deep-layer mPFC neurons following chronic ethanol vapor treatment (Kroener et al., 2012). LVPNs within the mPFC receive diverse inputs from a number of brain regions and local neurochemical modulators, including corticotrophin-releasing factor and acetylcholine, which are sensitive to alcohol and could thus influence the excitatory drive onto these neurons. In particular, hyperactivity of the limbic inputs to the mPFC are also thought to underlie the behavioral effects of compulsive drug seeking (Bechara, 2005) and to play a role in the extinction of alcohol addiction (Gass et al., 2014). Previous studies have also identified alcohol-induced dysfunction of cortico-amygdala circuits following CIE and binge-like ethanol consumption (George et al., 2012; Pleil et al., 2015). Furthermore, human brain imaging has revealed decreased dopamine responses (Volkow et al., 2007) and reduced dopamine transmission in the mPFC of alcohol-dependent subjects (Narendran et al., 2014).

In conclusion, our study is the first to demonstrate the long-term effects of binge-like ethanol consumption on mPFC LVPN activity and structure, using a voluntary intermittent two-bottle choice drinking paradigm. Our results highlight differences with respect to changes caused by passive ethanol administration using vapor inhalation

models. Our data support converging evidence from human brain imaging and animal studies that have implicated mPFC dysfunction as an important contributor to compulsive alcohol seeking and the development of alcohol dependence. Our study also suggests that reducing excitatory drive onto mPFC LVPNs may represent a novel strategy for managing alcohol consumption following prolonged use.

References

- Arellano JI, Benavides-Piccione R, Defelipe J, Yuste R (2007) Ultrastructure of dendritic spines: correlation between synaptic and spine morphologies. *Front Neurosci* 1:131–143. [CrossRef](#) [Medline](#)
- Bechara A (2005) Decision making, impulse control and loss of willpower to resist drugs: a neurocognitive perspective. *Nat Neurosci* 8:1458–1463. [CrossRef](#) [Medline](#)
- Bellingham MC, Berger AJ (1996) Presynaptic depression of excitatory synaptic inputs to rat hypoglossal motoneurons by muscarinic M2 receptors. *J Neurophysiol* 76:3758–3770. [Medline](#)
- Carnicella S, Ron D, Barak S (2014) Intermittent ethanol access schedule in rats as a preclinical model of alcohol abuse. *Alcohol* 48:243–252. [CrossRef](#) [Medline](#)
- Chanraud S, Martelli C, Delain F, Kostogianni N, Douaud G, Aubin HJ, Reynaud M, Martinot JL (2007) Brain morphometry and cognitive performance in detoxified alcohol-dependents with preserved psychosocial functioning. *Neuropsychopharmacology* 32:429–438. [CrossRef](#) [Medline](#)
- Crews FT, Boettiger CA (2009) Impulsivity, frontal lobes and risk for addiction. *Pharmacol Biochem Behav* 93:237–247. [CrossRef](#) [Medline](#)
- Crews FT, Nixon K (2009) Mechanisms of neurodegeneration and regeneration in alcoholism. *Alcohol* 44:115–127. [CrossRef](#) [Medline](#)
- Dalley JW, Cardinal RN, Robbins TW (2004) Prefrontal executive and cognitive functions in rodents: neural and neurochemical substrates. *Neurosci Biobehav Rev* 28:771–784. [CrossRef](#) [Medline](#)
- Drummond GB (2009) Reporting ethical matters in the *Journal of Physiology*: standards and advice. *J Physiol* 587:713–719. [CrossRef](#) [Medline](#)
- Feduccia AA, Simms JA, Mill D, Yi HY, Bartlett SE (2014) Varenicline decreases ethanol intake and increases dopamine release via neuronal nicotinic acetylcholine receptors in the nucleus accumbens. *Br J Pharmacol* 171:3420–3431. [CrossRef](#) [Medline](#)
- Fein G, Di Sclafani V, Cardenas VA, Goldmann H, Tolou-Shams M, Meyerhoff DJ (2002) Cortical gray matter loss in treatment-naive alcohol dependent individuals. *Alcohol Clin Exp Res* 26:558–564. [Medline](#)
- Fogarty MJ, Noakes PG, Bellingham MC (2015) Motor cortex layer V pyramidal neurons exhibit dendritic regression, spine loss, and increased synaptic excitation in the presymptomatic hSOD1(G93A) mouse model of amyotrophic lateral sclerosis. *J Neurosci* 35:643–647. [CrossRef](#)
- Fogarty MJ, Kanjhan R, Bellingham MC, Noakes PG (2016) Glycinergic neurotransmission: a potent regulator of embryonic motor neuron dendritic morphology and synaptic plasticity. *J Neurosci* 36:80–87. [CrossRef](#) [Medline](#)
- Gabbott PL, Dickie BG, Vaid RR, Headlam AJ, Bacon SJ (1997) Local-circuit neurones in the medial prefrontal cortex (areas 25, 32 and 24b) in the rat: morphology and quantitative distribution. *J Comp Neurol* 377:465–499. [Medline](#)
- Gass JT, Trantham-Davidson H, Kassab AS, Glen WB Jr, Olive MF, Chandler LJ (2014) Enhancement of extinction learning attenuates ethanol-seeking behavior and alters plasticity in the prefrontal cortex. *J Neurosci* 34:7562–7574. [CrossRef](#)
- George O, Sanders C, Freiling J, Grigoryan E, Vu S, Allen CD, Crawford E, Mandyam CD, Koob GF (2012) Recruitment of medial prefrontal cortex neurons during alcohol withdrawal predicts cognitive impairment and excessive alcohol drinking. *Proc Natl Acad Sci U S A* 109:18156–18161. [CrossRef](#) [Medline](#)
- Goldstein RZ, Volkow ND (2011) Dysfunction of the prefrontal cortex in addiction: neuroimaging findings and clinical implications. *Nat Rev Neurosci* 12:652–669. [CrossRef](#) [Medline](#)
- Goldstein RZ, Leskovan AC, Hoff AL, Hitzemann R, Bashan F, Khalsa SS, Wang GJ, Fowler JS, Volkow ND (2004) Severity of neuropsychological impairment in cocaine and alcohol addiction: association with metabolism in the prefrontal cortex. *Neuropsychologia* 42:1447–1458. [CrossRef](#) [Medline](#)
- Grüsser SM, Wrase J, Klein S, Hermann D, Smolka MN, Ruf M, Weber-Fahr W, Flor H, Mann K, Braus DF, Heinz A (2004) Cue-induced activation of the striatum and medial prefrontal cortex is associated with subsequent relapse in abstinent alcoholics. *Psychopharmacology (Berl)* 175:296–302. [CrossRef](#) [Medline](#)
- Harris KM, Kater SB (1994) Dendritic spines: cellular specializations imparting both stability and flexibility to synaptic function. *Annu Rev Neurosci* 17:341–371. [CrossRef](#) [Medline](#)
- Harris KM, Jensen FE, Tsao B (1992) Three-dimensional structure of dendritic spines and synapses in rat hippocampus (CA1) at postnatal day 15 and adult ages: implications for the maturation of synaptic physiology and long-term potentiation. *J Neurosci* 12:2685–2705. [Medline](#)
- Holmes A, Fitzgerald PJ, MacPherson KP, DeBrouse L, Colacicco G, Flynn SM, Masneuf S, Pleil KE, Li C, Marcinkiewicz CA, Kash TL, Gunduz-Cinar O, Camp M (2012) Chronic alcohol remodels prefrontal neurons and disrupts NMDAR-mediated fear extinction encoding. *Nat Neurosci* 15:1359–1361. [CrossRef](#) [Medline](#)
- Jones EG, Powell TP (1969) Morphological variations in the dendritic spines of the neocortex. *J Cell Sci* 5:509–529. [Medline](#)
- Kanjhan R, Bellingham MC (2013) Neurobiotin electroporation for combined structural and functional analysis of neurons in developing mouse brain slices. In: *Stimulation and inhibition of neurons (Pilowsky PM, Farnham MMJ, Fong AY, eds)*, pp 151–165. New York: Humana.
- Kim A, Zamora-Martinez ER, Edwards S, Mandyam CD (2015) Structural reorganization of pyramidal neurons in the medial prefrontal cortex of alcohol dependent rats is associated with altered glial plasticity. *Brain Struct Funct* 220:1705–1720. [CrossRef](#) [Medline](#)
- Klenowski PM, Fogarty MJ, Belmer A, Noakes PG, Bellingham MC, Bartlett SE (2015) Structural and functional characterization of dendritic arbors and GABAergic synaptic inputs on interneurons and principal cells in the rat basolateral amygdala. *J Neurophysiol* 114:942–957. [CrossRef](#) [Medline](#)
- Klenowski PM, Shariff MR, Belmer A, Fogarty MJ, Mu EW, Bellingham MC, Bartlett SE (2016) Prolonged consumption of sucrose in a binge-like manner, alters the morphology of medium spiny neurons in the nucleus accumbens shell. *Front Behav Neurosci* 10:54. [CrossRef](#)
- Koob GF (2013) Addiction is a reward deficit and stress surfeit disorder. *Front Psychiatry* 4:72. [CrossRef](#) [Medline](#)
- Koob GF, Volkow ND (2010) Neurocircuitry of addiction. *Neuropsychopharmacology* 35:217–238. [CrossRef](#) [Medline](#)
- Kroener S, Mulholland PJ, New NN, Gass JT, Becker HC, Chandler LJ (2012) Chronic alcohol exposure alters behavioral and synaptic plasticity of the rodent prefrontal cortex. *PLoS One* 7:e37541. [CrossRef](#) [Medline](#)
- Larkman A, Mason A (1990) Correlations between morphology and electrophysiology of pyramidal neurons in slices of rat visual cortex. I. Establishment of cell classes. *J Neurosci* 10:1407–1414.
- Maiti P, Manna J, McDonald MP (2015) Merging advanced technologies with classical methods to uncover dendritic spine dynamics: a hot spot of synaptic plasticity. *Neurosci Res* 96:1–13. [CrossRef](#) [Medline](#)
- Myrick H, Anton RF, Li X, Henderson S, Drobos D, Voronin K, George MS (2004) Differential brain activity in alcoholics and social drinkers to alcohol cues: relationship to craving. *Neuropsychopharmacology* 29:393–402. [CrossRef](#) [Medline](#)

- Narendran R, Mason NS, Paris J, Himes ML, Douaihy AB, Frankle WG (2014) Decreased prefrontal cortical dopamine transmission in alcoholism. *Am J Psychiatry* 171:881–888. [CrossRef](#) [Medline](#)
- Obernier JA, Bouldin TW, Crews FT (2002) Binge ethanol exposure in adult rats causes necrotic cell death. *Alcohol Clin Exp Res* 26:547–557. [Medline](#)
- Ongür D, Price JL (2000) The organization of networks within the orbital and medial prefrontal cortex of rats, monkeys and humans. *Cereb Cortex* 10:206–219. [Medline](#)
- Patkar OL, Belmer A, Holgate JY, Tarren JR, Shariff MR, Morgan M, Fogarty MJ, Bellingham MC, Bartlett SE, Klenowski PM (2016) The antihypertensive drug pindolol attenuates long- but not short-term binge-like ethanol consumption in mice. *Addict Biol*. Advance online publication. Retrieved November 29, 2016. [CrossRef](#)
- Paxinos G, Watson C (2007) *The rat brain in stereotaxic coordinates*, Ed 6. Amsterdam: Elsevier.
- Peters A, Kaiserman-Abramof IR (1970) The small pyramidal neuron of the rat cerebral cortex. The perikaryon, dendrites and spines. *Am J Anat* 127:321–355. [CrossRef](#) [Medline](#)
- Pleil KE, Lowery-Gionta EG, Crowley NA, Li C, Marcinkiewicz CA, Rose JH, McCall NM, Maldonado-Devincci AM, Morrow AL, Jones SR, Kash TL (2015) Effects of chronic ethanol exposure on neuronal function in the prefrontal cortex and extended amygdala. *Neuropharmacology* 99:735–749. [CrossRef](#) [Medline](#)
- Santos N, Chatterjee S, Henry A, Holgate J, Bartlett SE (2013) The $\alpha 5$ neuronal nicotinic acetylcholine receptor subunit plays an important role in the sedative effects of ethanol but does not modulate consumption in mice. *Alcohol Clin Exp Res* 37:655–662. [CrossRef](#)
- Shariff M, Quik M, Holgate J, Morgan M, Patkar OL, Tam V, Belmer A, Bartlett SE (2016) Neuronal nicotinic acetylcholine receptor modulators reduce sugar intake. *PLoS One* 11:e0150270. [CrossRef](#) [Medline](#)
- Sholl DA (1953) Dendritic organization in the neurons of the visual and motor cortices of the cat. *J Anat* 87:387–406. [Medline](#)
- Simms JA, Steensland P, Medina B, Abernathy KE, Chandler LJ, Wise R, Bartlett SE (2008) Intermittent access to 20% ethanol induces high ethanol consumption in Long-Evans and Wistar rats. *Alcohol Clin Exp Res* 32:1816–1823. [CrossRef](#) [Medline](#)
- Spruston N (2008) Pyramidal neurons: dendritic structure and synaptic integration. *Nat Rev Neurosci* 9:206–221. [CrossRef](#) [Medline](#)
- Steensland P, Simms JA, Holgate J, Richards JK, Bartlett SE (2007) Varenicline, an $\alpha 4\beta 2$ nicotinic acetylcholine receptor partial agonist, selectively decreases ethanol consumption and seeking. *Proc Natl Acad Sci U S A* 104:12518–12523. [CrossRef](#) [Medline](#)
- Stuart G, Spruston N (1998) Determinants of voltage attenuation in neocortical pyramidal neuron dendrites. *J Neurosci* 18:3501–3510. [Medline](#)
- Tu Y, Kroener S, Abernathy K, Lapish C, Seamans J, Chandler LJ, Woodward JJ (2007) Ethanol inhibits persistent activity in prefrontal cortical neurons. *J Neurosci* 27:4765–4775. [CrossRef](#) [Medline](#)
- van Aerde KI, Feldmeyer D (2015) Morphological and physiological characterization of pyramidal neuron subtypes in rat medial prefrontal cortex. *Cereb Cortex* 25:788–805. [CrossRef](#) [Medline](#)
- van Zundert B, Peuscher MH, Hynynen M, Chen A, Neve RL, Brown RH Jr, Constantine-Paton M, Bellingham MC (2008) Neonatal neuronal circuitry shows hyperexcitable disturbance in a mouse model of the adult-onset neurodegenerative disease amyotrophic lateral sclerosis. *J Neurosci* 28:10864–10874. [CrossRef](#)
- Volkow ND, Wang GJ, Telang F, Fowler JS, Logan J, Jayne M, Ma Y, Pradhan K, Wong C (2007) Profound decreases in dopamine release in striatum in detoxified alcoholics: possible orbitofrontal involvement. *J Neurosci* 27:12700–12706. [CrossRef](#) [Medline](#)
- Weitlauf C, Woodward JJ (2008) Ethanol selectively attenuates NMDAR-mediated synaptic transmission in the prefrontal cortex. *Alcohol Clin Exp Res* 32:690–698. [CrossRef](#) [Medline](#)
- Williams SR, Stuart GJ (2002) Dependence of EPSP efficacy on synapse location in neocortical pyramidal neurons. *Science* 295:1907–1910. [CrossRef](#) [Medline](#)
- Williams SR, Stuart GJ (2003) Role of dendritic synapse location in the control of action potential output. *Trends Neurosci* 26:147–154. [CrossRef](#) [Medline](#)
- Wise RA (1973) Voluntary ethanol intake in rats following exposure to ethanol on various schedules. *Psychopharmacologia* 29:203–210. [Medline](#)
- Woodward JJ, Pava MJ (2009) Effects of ethanol on persistent activity and up-States in excitatory and inhibitory neurons in prefrontal cortex. *Alcohol Clin Exp Res* 33:2134–2140. [CrossRef](#) [Medline](#)
- Zapata A, Gonzales RA, Shippenberg TS (2006) Repeated ethanol intoxication induces behavioral sensitization in the absence of a sensitized accumbens dopamine response in C57BL/6J and DBA/2J mice. *Neuropsychopharmacology* 31:396–405. [CrossRef](#) [Medline](#)